

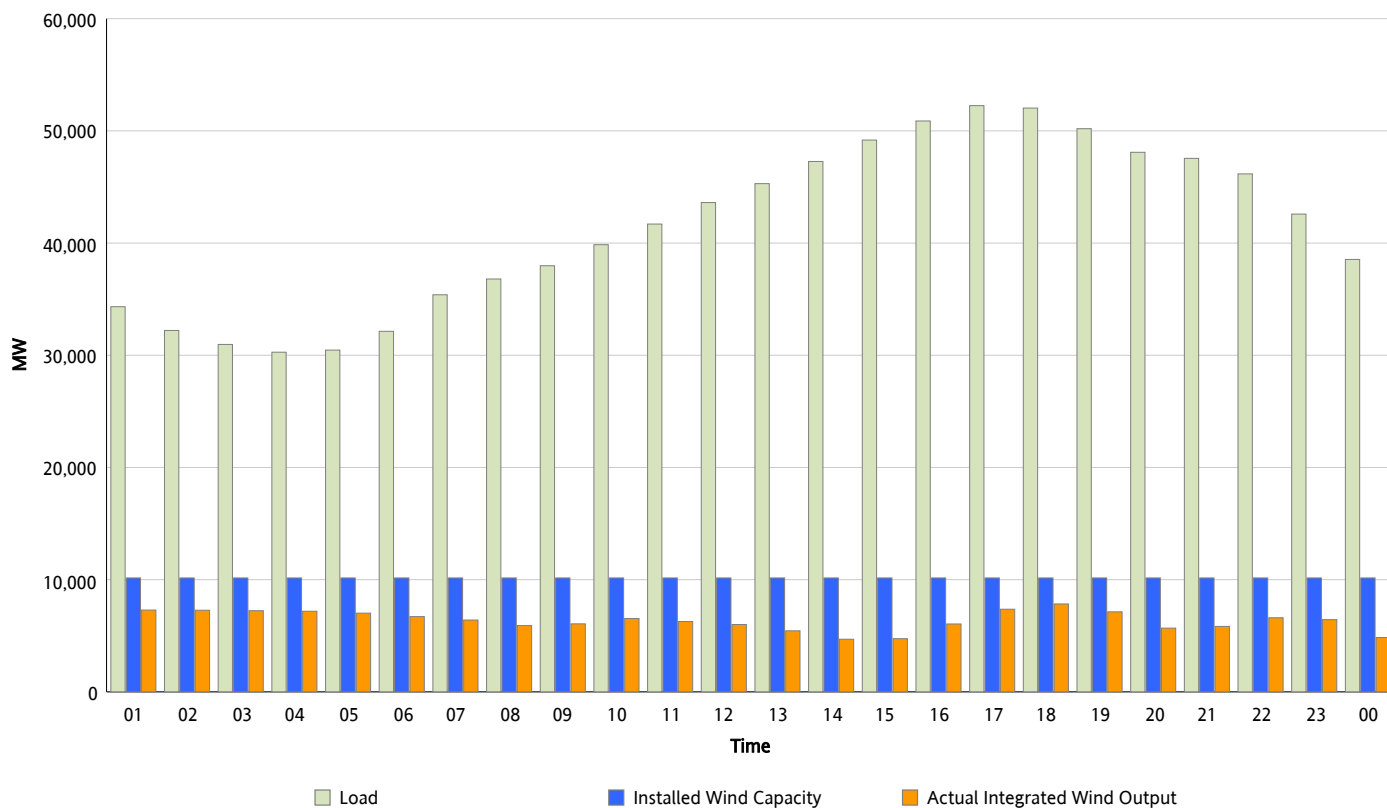


## ERCOT Grid Operations

### Wind Integration Report : 05/23/2013

Peak Load	52,249 MW
Load Peak Hour (HE)	17
Wind Over Peak	7,367 MW
Wind Record 05/02/13	9,674 MW
Max Wind Value*	7,962 MW
Wind Peak Time	17:53
Wind Integration %	15.39 %

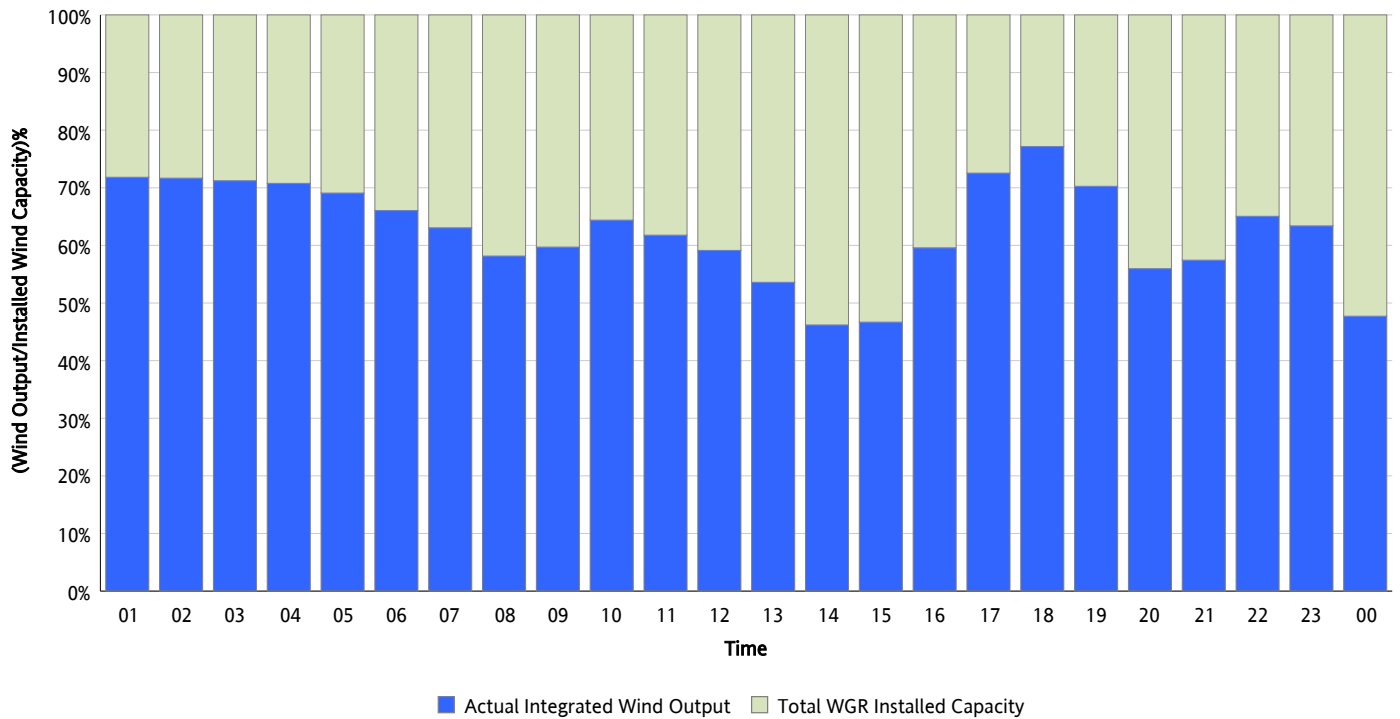
**Hourly Average Actual Load vs. Actual Wind Output**  
**05/23/2013**



\* Wind Record and Wind Max represent instantaneous values and the rest of the values are integrated over the hour

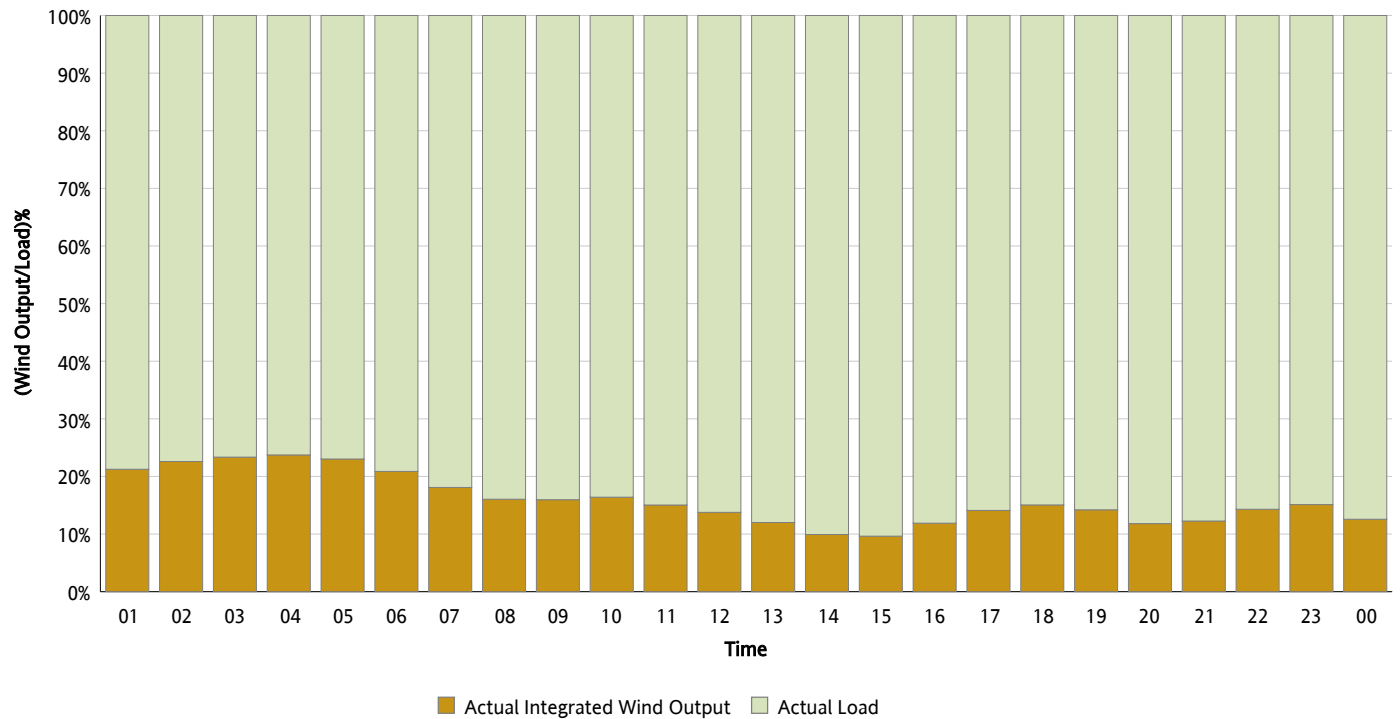
## Actual Wind Output as a Percentage of the Total Installed Wind Capacity

05/23/2013



## Actual Wind Output as a Percentage of the ERCOT Load

05/23/2013



## ERCOT Load vs. Actual Wind Output

05/16/2013 - 05/23/2013

